

**BEYOND**

Building a Centre of Excellence  
for EO-based monitoring of Natural Disasters



# “Space applications in the service of compliance with the European Floods Directive”

**Athanasia PARDALI**

*Special Secretariat for Water/  
Ministry of Environment and Energy*

Greece

**The final BEYOND Workshop, 17 May 2016  
Athens, Electra Palace**



FP7-Regpot-2012-23-1



The **Special Secretariat for Water (SSW)** of the Ministry of Environment and Energy and the Water Directorates of the Decentralized Administrations are responsible for the implementation of the Floods Directive 2007/60/EC in Greece.



**The final BEYOND Workshop, 17 May 2016  
Athens, Electra Palace**



FP7-Regpot-2012-23-1



The implementation of the Floods Directive 2007/60/EC in Greece, according to the relative JMD 31822/1542/E103/2010, includes:

- The identification of the **Competent Authorities**
- The identification of **Areas with Potential Significant Flood Risk (APSFRs)**
- The preparation of **Flood Hazard Maps** and **Flood Risk Maps** for APSFRs
- The drawing up and the establishment of **Flood Risk Management Plans** for APSFRs

The final BEYOND Workshop, 17 May 2016  
Athens, Electra Palace



FP7-Regpot-2012-23-1



## Competent Authorities for flood risk management in Greece

### National Level: 1. **Special Secretariat for Water (SSW)**

of the Hellenic Ministry of Environment and Energy

2. **General Secretariat for Civil Protection** of the Hellenic Ministry of Interior and Administrative Reconstruction

### Regional Level: 1. **Water Directorates** of Decentralised Administrations

2. **Civil Protection Directorates** of Decentralised Administrations





## Areas with Potential Significant Flood Risk (APSFRs)

The Special Secretariat for Water, based on available or readily derivable information such as records and studies on long term observations on the occurrence of floods, undertook a preliminary flood risk assessment and defined the Areas with Potential Significant Flood Risk

**The final BEYOND Workshop, 17 May 2016  
Athens, Electra Palace**





# BEYOND

Building a Centre of Excellence  
for EO-based monitoring of Natural Disasters



SEVENTH FRAMEWORK  
PROGRAMME



## Past Floods data collection and evaluation: Data Sources

- **Public Services:**

1. General Secretariat for Civil Protection

Data concerning events that occurred between 2007 and 2012 (date, location, cause, mechanism of flooding etc) in cases of severe events of flooding when declaration of the state of emergency took place.

2. Hellenic Ministry of Infrastructure, Transport and Networks

(Official records of the Directorate for the Recovery of Natural Disasters Consequences, ex. Earthquake Recovery Service). Data from 1994 to 2004 giving information about the location of the municipalities affected, the date of the flood event and the amount for recovery for houses and households.



## Past Floods data collection and evaluation: Data Sources

- **Public Services:**

3. Hellenic Agricultural Insurance Organization (ELGA) Data from 1986 to 2009 giving information about the location of the municipalities affected, the date of the flood event, the amount of compensation, the area of rural land which was flooded, the number of trees and animals affected.

4. Hellenic Fire Corps Data from 2000 to 2011 are giving information about the location, the address, the description of the affected area and the cause of flooding.



## Past Floods data collection and evaluation: Data Sources

### • Press:

The data collection for this category has been mainly fulfilled through the digital library implemented by the National Library of Greece (<http://www.nlg.gr/>). The library covers the period from 1893 to 1983 and the information is detectable through dates and keywords.

### •Studies:

✓Studies concerning floods from: the Ministry of Infrastructure, Transport and Networks, the Ministry of Rural Development and Food, Regions and other Hellenic Organisations relative to floods .

✓University Studies and Research related to the causes and the impacts of floods.





## Past Floods data collection and evaluation:

### Data entry and management

The Special Secretariat for Water created in November 2012 a data base containing all information needed for the Reporting to the Water Information System for Europe (WISE) such us:

- The date of the floods
- The duration of the floods
- The type of the floods (fluvial, pluvial, coastal, e.tc)
- The areas/extent of the floods - inundated areas
- The length of floods
- The adverse impacts of floods on cultural heritage, economic activity, human health and the environment

**The final BEYOND Workshop, 17 May 2016**  
**Athens, Electra Palace**



FP7-Regpot-2012-23-1



## Selection of the events with significant past adverse consequences - Geographical data

The total amount of the entries of past floods events was 1.627. Using appropriate evaluation criteria according to the guideline of the EU Floods Directive the number of the significant flood events was 330.

The Floods locations were plotted on a map in GIS environment (scale of 1:50.000).



## Areas with Potential Significant Flood Risk (APSFRs)



## Review of the Preliminary flood assessment

Nowadays the challenge for the Special Secretariat for Water is the collection of all available information for the current floods events in order to update the Areas with Potential Significant Flood Risk.



Full and updated report of the Preliminary Flood Risk Assessment is required by the European Commission (submitted to WISE) until 2018.

**The final BEYOND Workshop, 17 May 2016  
Athens, Electra Palace**



FP7-Regpot-2012-23-1



## Review of the Preliminary flood assessment

A Data Base with all the information needed for the Reporting to the Water Information System for Europe (WISE) has been created for new data entry according to the flood events as this is going to be collected by all involved agencies in Regional and National level like:

- The involved bodies from the Ministries
- The First Response Agencies (Fire Corps, Police)
- The Water Directorates and Civil Protection Directorates of Decentralised Administrations
- The involved bodies from the Regional Authorities
- The involved bodies from the Municipalities

**The final BEYOND Workshop, 17 May 2016**  
**Athens, Electra Palace**



FP7-Regpot-2012-23-1





# BEYOND

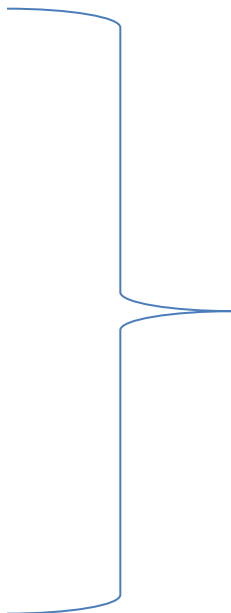
Building a Centre of Excellence for EO-based monitoring of Natural Disasters



## The benefit of this project: Review of the Preliminary flood assessment

- ✓ Useful metadata related to the floods like:
  - ✓ The flood duration
  - ✓ The flood extent
  - ✓ The flood length
  - ✓ The cause of the flood
  - ✓ The adverse impacts of floods on cultural heritage, economic activity, human health and the environment

are going to be deliverable.



**This information is going to be evaluated for the Review of the Preliminary flood assessment and finally for updating the Areas with Potential Significant Flood Risk.**



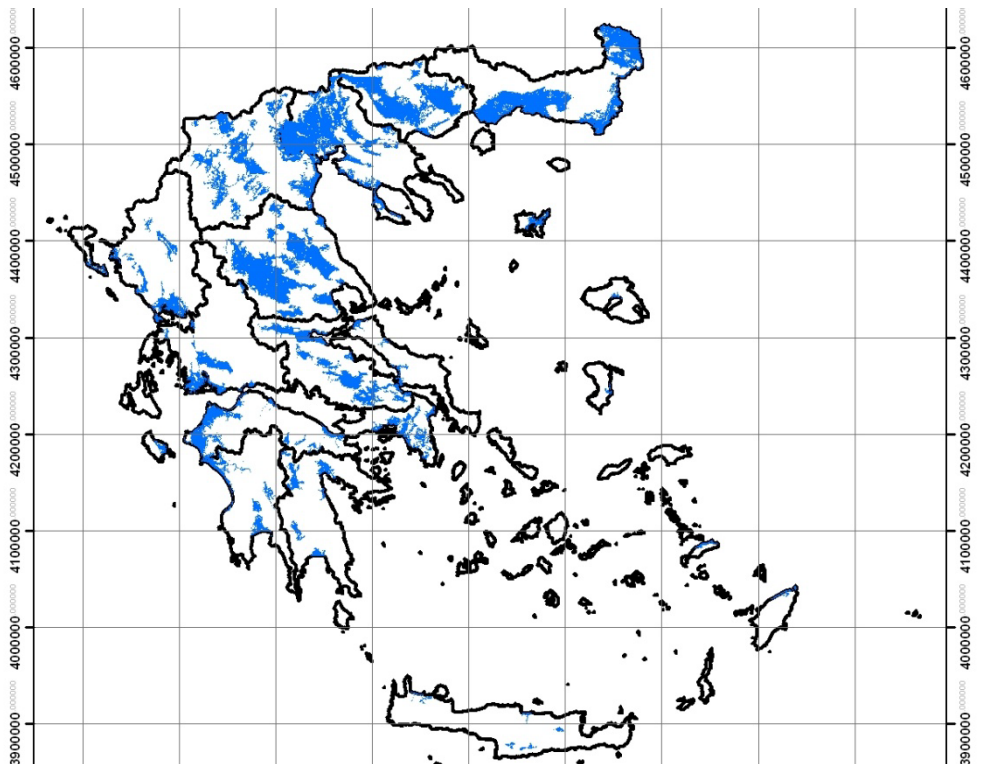


# BEYOND

Building a Centre of Excellence  
for EO-based monitoring of Natural Disasters



## Thank you for your attention!



**Athanasia Pardali**  
Civil Engineer



**Hellenic Ministry for the  
Environment & Energy  
Special Secretariat for Water**  
Address: 2 Iatridou & 124 Kifisias  
St. 115 26 Athens  
**Tel:** +30 210 69 31 323  
**Fax:** +30 210 69 94 355  
**Email:** [a.pardali@prv.ypeka.gr](mailto:a.pardali@prv.ypeka.gr)

**The final BEYOND Workshop, 17 May 2016  
Athens, Electra Palace**



FP7-Regpot-2012-23-1