



BEYOND

Building a Centre of Excellence
for EO-based monitoring of Natural Disasters



Benchmarking BEYOND through success indicators

Ioannis Papoutsis

The BEYOND Advisory Committee meeting
June 24, 2016



FP7-Regpot-2012-13-1



BEYOND

Building a Centre of Excellence
for EO-based monitoring of Natural Disasters



Success indicator dimensions

BEYOND Center of Excellence

Boosting
innovative
research

Infrastructure
upgrading

Visibility

Enhancing
research
capacity

Exploitation
of IP



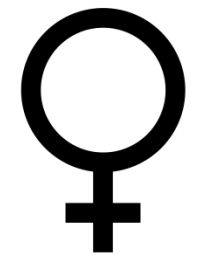
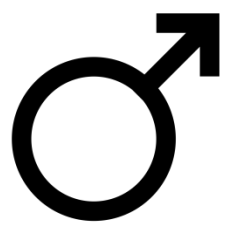
BEYOND

Building a Centre of Excellence for EO-based monitoring of Natural Disasters



Boosting innovative research

17
New recruitments:
researchers & key professionals





BEYOND

Building a Centre of Excellence for EO-based monitoring of Natural Disasters



Infrastructure upgrading

“ The Institute for Astronomy, Astrophysics, Space Applications and Remote Sensing (IAASARS), one of the three institutes of the National Observatory of Athens (NOA), recently signed an agreement with the United Nations Office for Outer Space Affairs to become a Regional Support Office of the UN-SPIDER Programme.

~ Published at KWOLEDGE PORTAL, on 04/06/2016



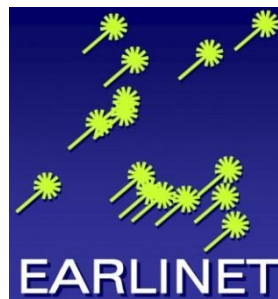
UNITED NATIONS
Office for Outer Space Affairs
UN-SPIDER

IAASARS/NOA IS GREECE UN-SPIDER REGIONAL SUPPORT OFFICE

[IAASARS UN-Spider RSO profile](#)

[IAASARS of NOA signs agreement to become a UN-Spider RSO in Greece](#)

[UN-Spider strengthened three new regional support offices](#)



GEO SB-04



Visibility



*The BEYOND Advisory Committee meeting
June 24, 2016*



Enhancing research capacity

27

Journal
publications

48

3rd party
citations

30

proposals

Exploitation of IP

1
patent





Exploitation of IP

3M€

New funds

- ✓ 30 proposals
- ✓ 11 new projects
- => 36% success rate



BEYOND

Building a Centre of Excellence for EO-based monitoring of Natural Disasters



Exploitation of IP: new projects

Key info

GEO-CRADLE

H2020

Coordinator

800k€

Multi-hazard

Key info

ACTRIS-2

H2020

Partner

100k€

Atmospheric

Copernicus

Key info

EMS

JRC

Partner

800k€

Multi-hazard

Key info

RECAP

H2020

Partner

300k€

Agriculture

Key info

ECARS

H2020

Partner

170k€

Atmospheric

Key info

TREASURE

DG ECHO

Partner

100k€

Urban Env.

Key info

MarcoPolo

FP7 - Space

Partner

100k€

Atmospheric

ESA

Key info

ESA-DRR

ESA

Partner

75k€

Geohazards

Key info

DEDICATE

ESA

Coordinator

90k€

Atmospheric

Key info

Hyflex

ESA

Partner

10k€

Atmospheric

Key info

CHARADMexp

ESA

Coordinator

50k€

Atmospheric

Key info

MULTIPLY

ESA

Partner

230k€

Atmospheric

Key info

NextGEOSS

H2020

Partner

450k€

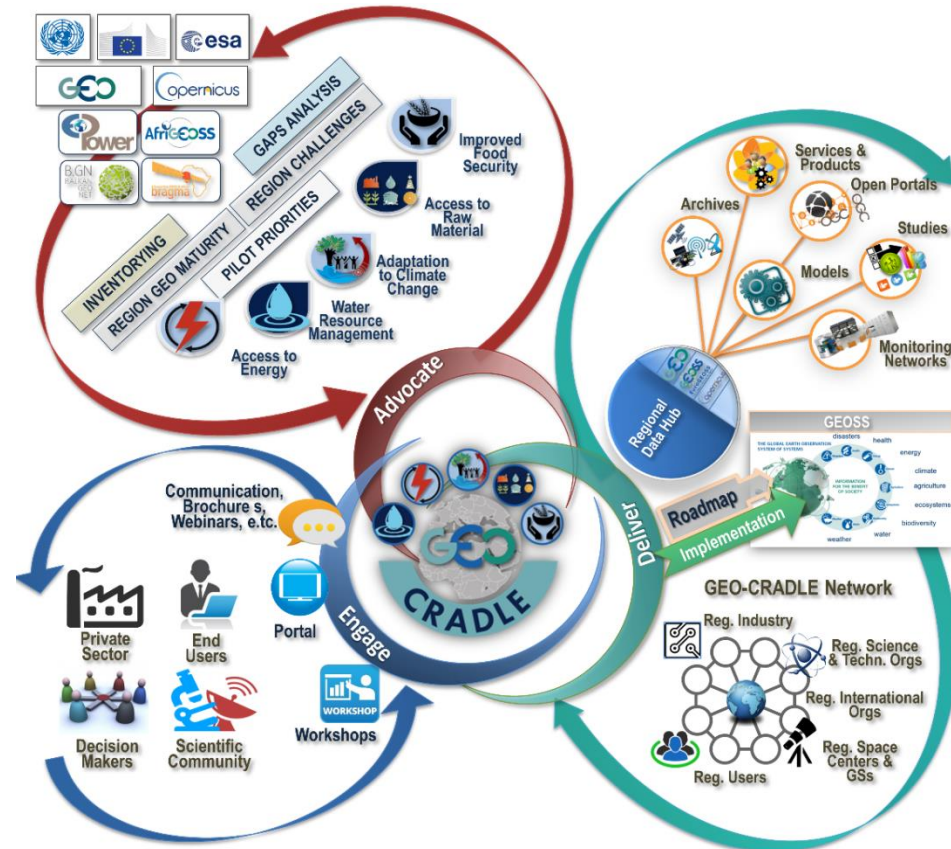
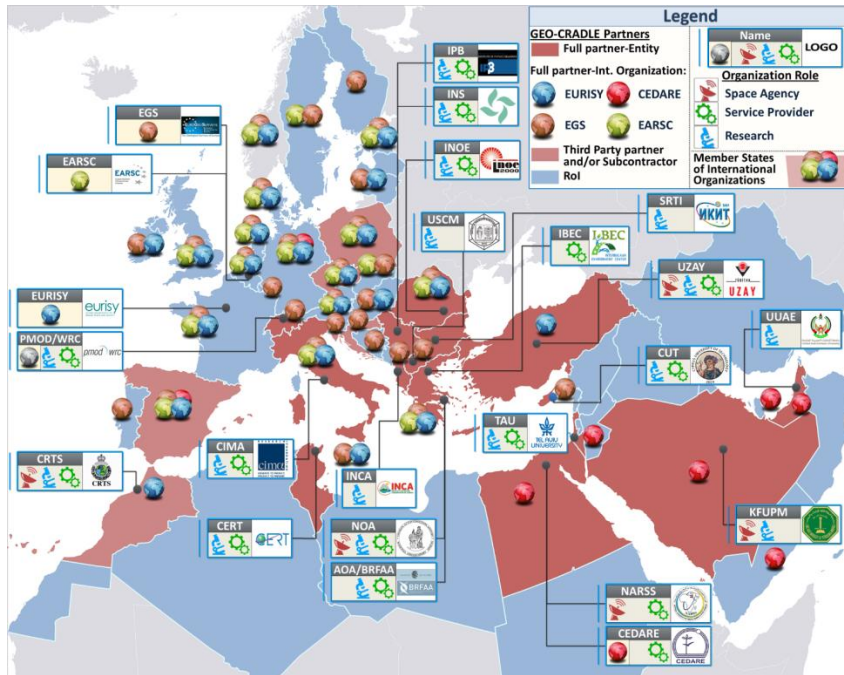
GEOSS

H2020



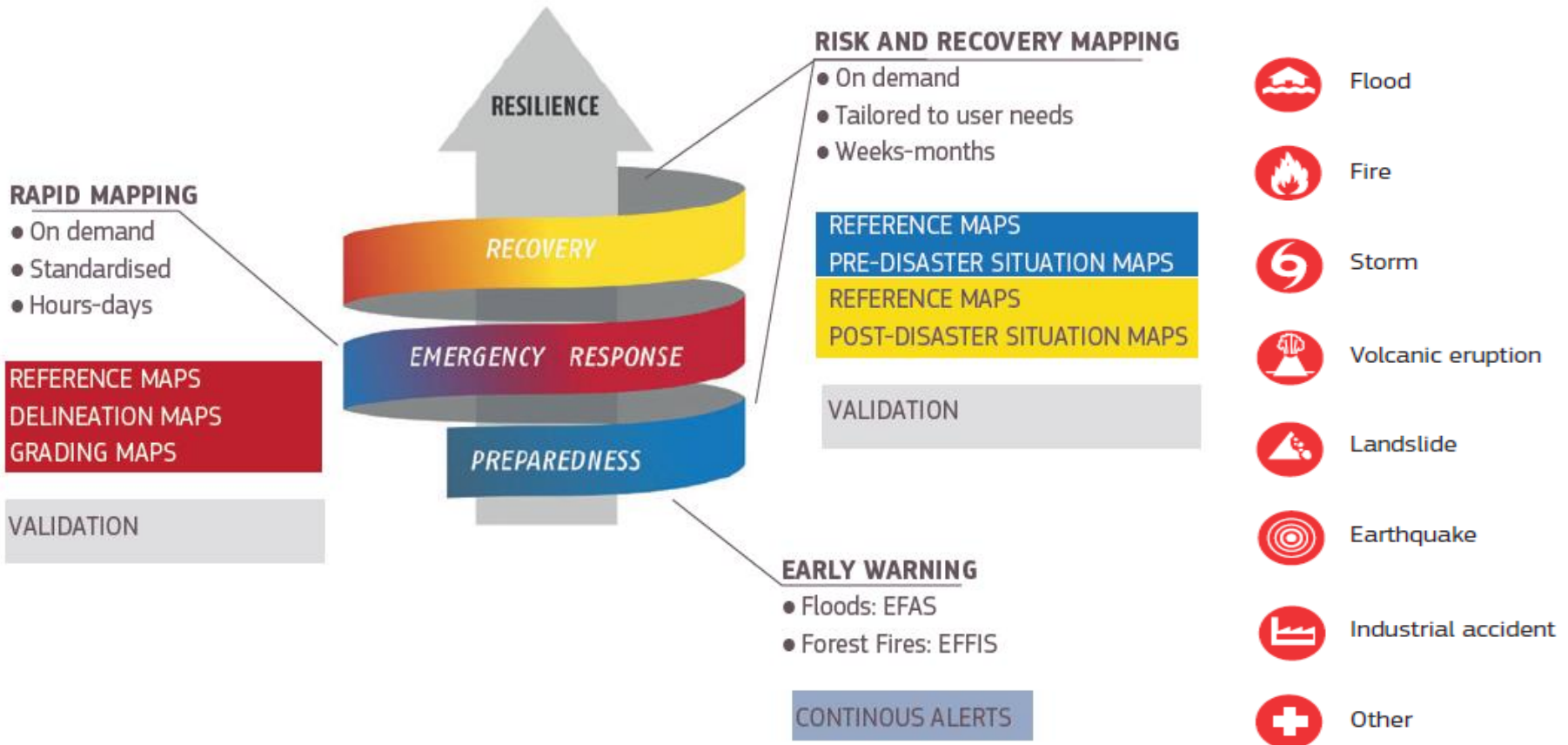
GEO-CRADLE

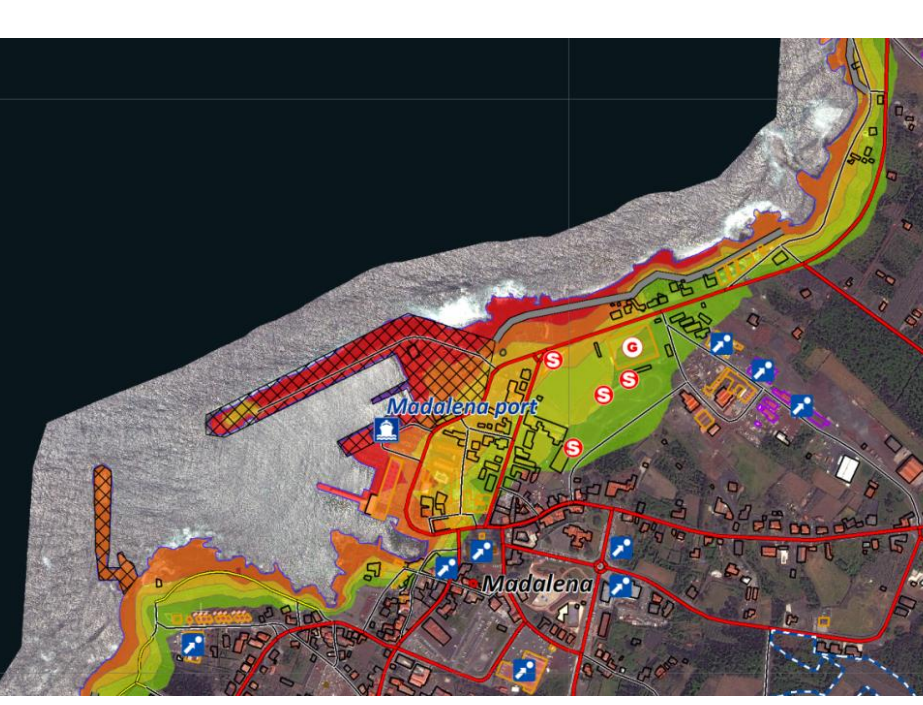
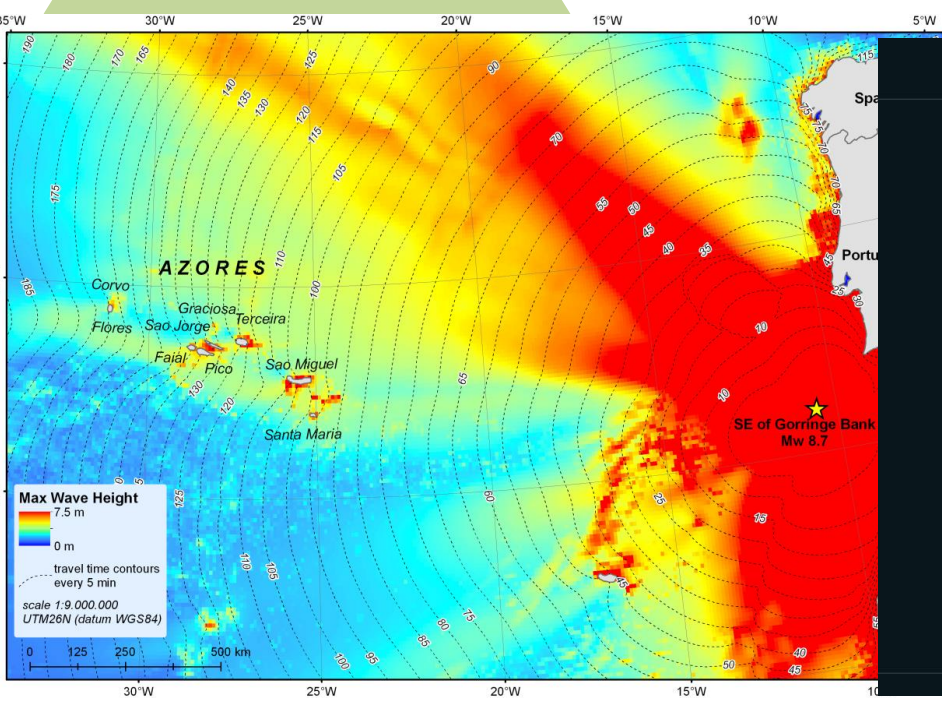
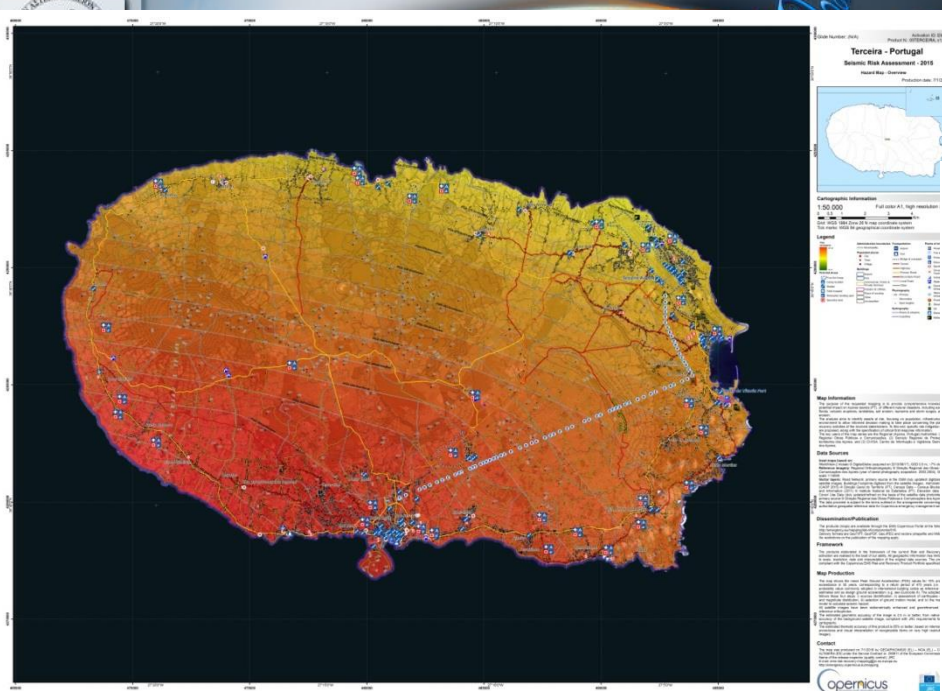
COORDINATING AND INTEGRATING STATE-OF-THE-ART EARTH OBSERVATION ACTIVITIES IN THE REGIONS OF NORTH AFRICA, MIDDLE EAST, AND BALKANS AND DEVELPING LINKS WITH GEO RELATED INITIATIVES TOWARDS GEOSS



Copernicus Emergency Management Service Risk & Recovery

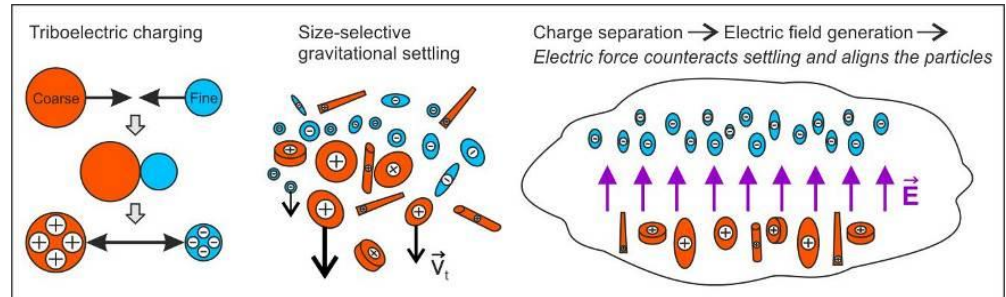
On-demand provision of EO-based geospatial information in support to emergency management





European Research Council Consolidator Grant 2016 Vassilis Amiridis

D-TECT: Does dust TriboElectrification affect our ClimaTe?



Wall-E: A lidar system for
detecting particle
orientation





BEYOND

Building a Centre of Excellence
for EO-based monitoring of Natural Disasters



Our flagships

1. FireHub: A Space Based Fire Management Hub
2. Smoke dispersion services
3. Operational real time system for Continuous Monitoring of the Urban Thermal Environment
4. UAV based damage assessment
5. Sentinel-1 GS for mapping of large-scale ground velocities
6. Geomagnetic data portal
7. Floods Observatory for south-eastern Europe



BEYOND

Building a Centre of Excellence
for EO-based monitoring of Natural Disasters



Outlook

- Disaster Hub: EO-based multi-disaster monitoring, coupled with **crowdsourcing** information
- Improved Saharan dust forecasts based on satellite **data assimilation**
- Urban Thermal Monitoring as a **downstream service** in new application areas (Health, Fitness, Environment, Heat stress, Energy, Smart Cities)
- **Near-real time** InSAR applications using Sentinel Collaborative Ground Segment
- Floods **Early Warning** System