



BEYOND

Building a Centre of Excellence
for EO-based monitoring of Natural Disasters



Iphigenia Keramitsoglou

URBAN THERMAL ENVIRONMENT

Institute for Astronomy, Astrophysics, Space Applications and Remote Sensing, National
Observatory of Athens

The BEYOND Advisory Committee meeting
June 24, 2016



FP7-Regpot-2012-13-1

Concept, Problem & Data Gap

- **URBAN HEAT ISLAND**

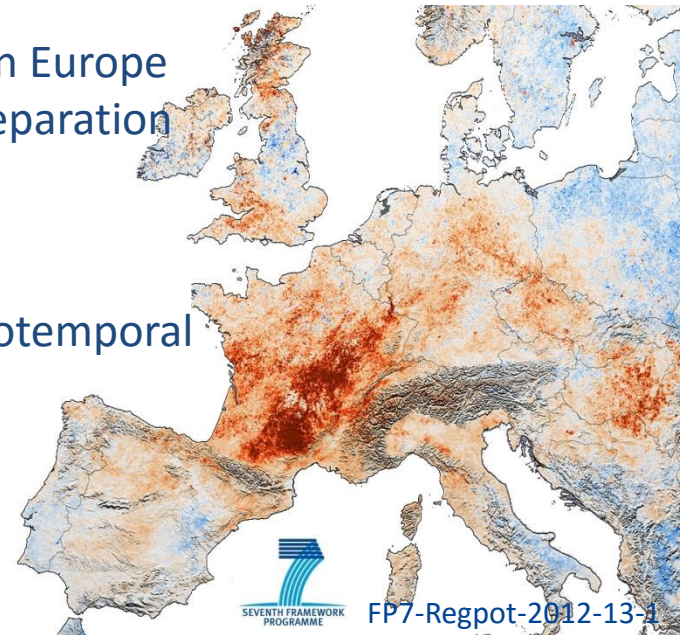
Urban areas are warmer than their rural surroundings | UHIs prolong and intensify heatwave events.

- **HEATWAVES**

The 2003 heatwave resulted to 70,000 excess deaths in Europe | Many countries are affected | There is a need for preparation

- **LACK OF DATA**

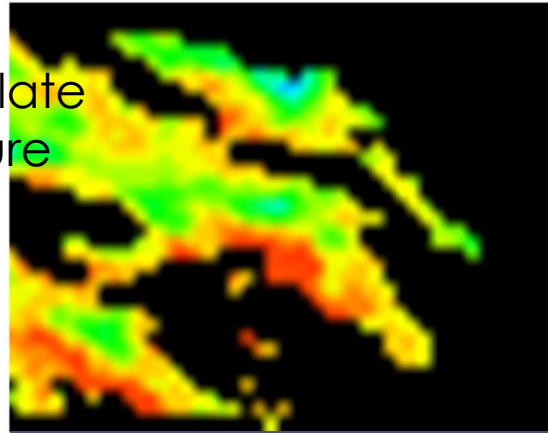
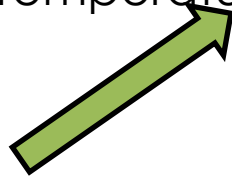
Currently, no operational service to provide high spatiotemporal urban temperature data exists.



Applications: Urban Thermal Environment

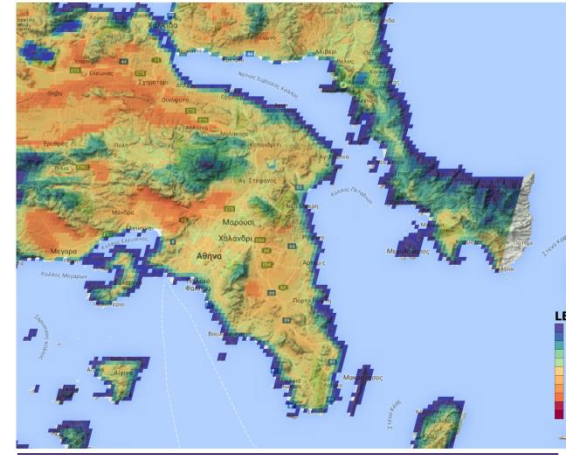
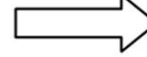
1. We get this image from our station

2. We calculate Temperature



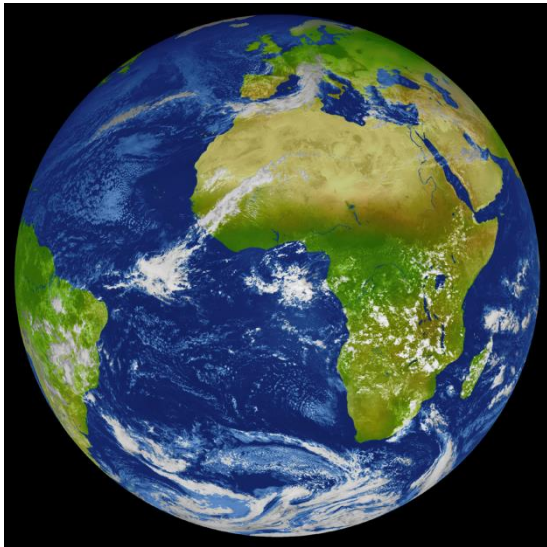
4-5 km, 5-15 min, whole Europe and Africa

3. We turn it into

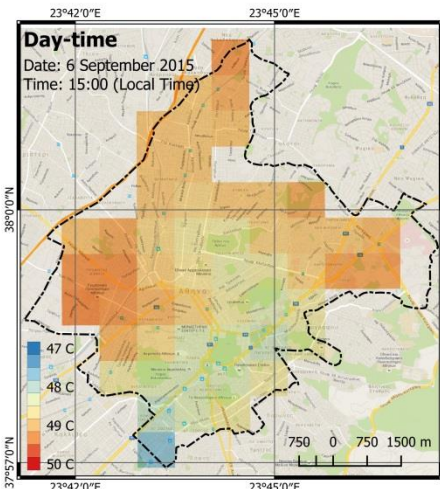
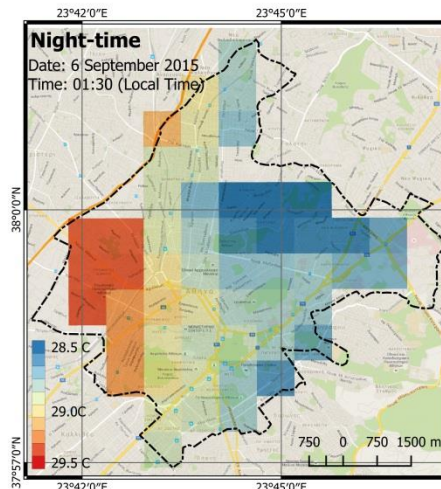


1 km, 5-15 min, all major European and African cities, Greater City area scale

4. Local scale



LAND SURFACE TEMPERATURE
City of Athens

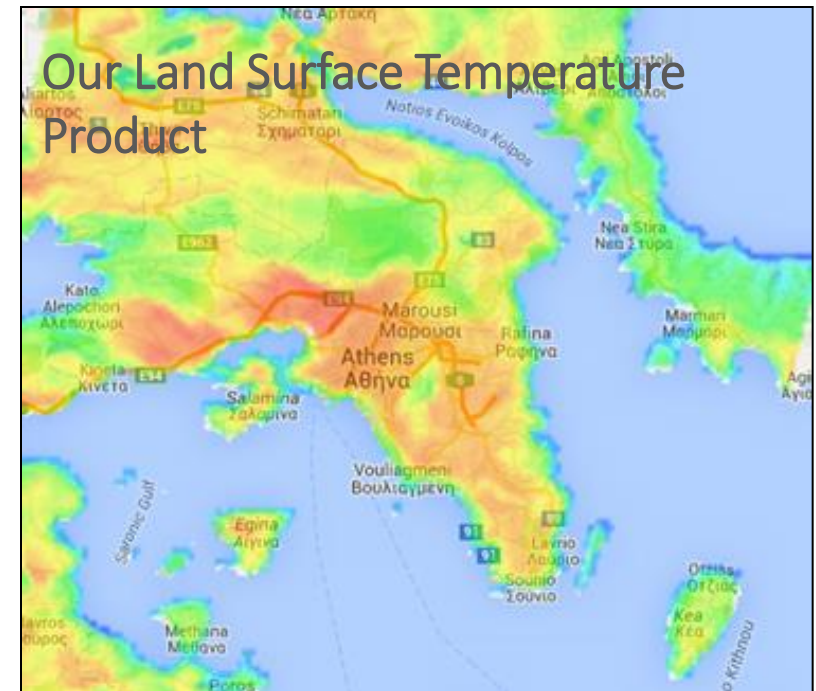
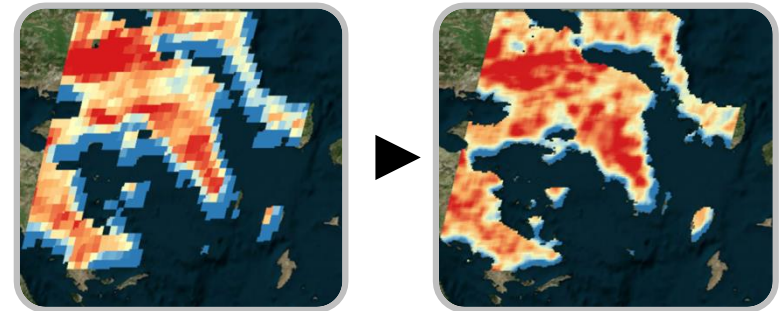


Real-time,
Operational, Online
every 5' at 1km.
Diurnal variability



Service

- We have developed of a fully automated system for the continuous monitoring of Land Surface Temperatures of European cities in real time every 5 minutes at 1km resolution.
- We employ EO data from MSG2-SEVIRI RSS.
- The system offers four significant advantages:
 1. it exploits the high temporal resolution of SEVIRI RSS imagery (5 min)
 2. it enhances the spatial resolution of LST down to 1 km
 3. it covers a large number of cities around the world, and
 4. the derived products are available in real time.





BEYOND

Building a Centre of Excellence
for EO-based monitoring of Natural Disasters



Twinnings



NASA Marshall Space Flight
Center, Earth Science Office,
USA



Center for Earth System Research and
Sustainability, University of Hamburg,
Germany



University of Valencia



*The BEYOND Advisory Committee meeting
June 24, 2016*



Highlights

1. MoU with the City of Athens (GR)



2. Negotiations with Region of Attica.



3. Co-Leader GEO Task



Applications

The way forward:

1. Scale up
2. Inclusion of more Cities
3. Development of Applications

